



## LISTING INFORMATION OF Fox Block Insulating Concrete Forms (Fox Block ICFs)

SPEC ID: 32745

Fox Blocks, a Division of Airlite Plastics Co.  
6110 Abbott Drive  
Omaha, NE 68110-2805

This report is for the exclusive use of Intertek's Client and is provided pursuant to the agreement between Intertek and its Client. Intertek's responsibility and liability are limited to the terms and conditions of the agreement. Intertek assumes no liability to any party, other than to the Client in accordance with the agreement, for any loss, expense or damage occasioned by the use of this report. Only the Client is authorized to permit copying or distribution of this report and then only in its entirety. Any use of the Intertek name or one of its marks for the sale or advertisement of the tested material, product or service must first be approved in writing by Intertek. The observations and test results in this report are relevant only to the sample tested. This report by itself does not imply that the material, product, or service is or has ever been under an Intertek certification program.

Fox Block ICFs are Insulated Concrete Form (ICF) systems that are formed of expanded polystyrene with polypropylene plastic cross-ties. Fox Block ICFs are pre-assembled ICF forms with a reversible, interlocking connection design. The systems are available in the following sizes and configurations:

- | 4" Straight
- | 4" 90° Corner
- | 4" 45° Corner
- | 6" Straight
- | 6" 90° Corner
- | 6" 45° Corner
- | 6" Corbel Ledge
- | 6" Taper Top
- | 6" T-Block (Short)
- | 6" T-Block (Long)
- | 6" Radius Blocks (5',6',7',8',9' &10')
- | 8" Straight
- | 8" 90° Corner
- | 8" 45° Corner
- | 8" Corbel Ledge
- | 8" Taper Top
- | 8" T-Block (Short)
- | 8" T-Block (Long)
- | 8" Curb Block
- | 10" Straight
- | 10" 90° Corner
- | 12" Straight
- | 12" 90° Corner

**RATINGS**

Product/Assembly	Standard	Rating (if applicable)
Fox Block ICFs	ASTM E119	Design no. FXB/ICF 240-01
	CAN/ULC S101	
	ASTM E2634, including: ASTM C578 (EPS) ASTM D635 (cross-tie) ASTM D638 (cross-tie) ASTM D732 (cross-tie) ASTM D1761 (cross-tie) ASTM D1929 (cross-tie) ASTM E84 (EPS) UL 1715 (ICF)	Type II EPS CC1 classification Min. tensile strength: 32.3 kN/m <sup>2</sup> (675 lb/ft <sup>2</sup> ) Min. shear strength: 3080 psi Refer to Table 2 of IRR-1010 Min. Ignition Temp. 350°C (662°F) FS ≤ 25, SD ≤ 450 Meets ASTM E2634 Section 6.3.1
	ICC-ES AC353	IRR-1010

ASTM E283 (4" ICF)	Max air infiltration 0.02 cfm/ft <sup>2</sup>
ASTM E331 (4" ICF)	No water leakage after 2 hours; 15 psf pressure differential
CAN/ULC S717.1, including:  CAN/ULC S701 (EPS) ASTM D635 (cross-tie) ASTM D638 (cross-tie) ASTM D732 (cross-tie) ASTM D1761 (cross-tie) ASTM D1929 (cross-tie)	Type 2 EPS CC1 classification Min. tensile strength: 32.3 kN/m <sup>2</sup> (675 lb/ft <sup>2</sup> ) Min. shear strength: 3080 psi Refer to Table 2 of IRR-1010 Min. Ignition Temp. 350°C (662°F)

**MANUFACTURING LOCATIONS**

The following facilities are certified to manufacture Fox Block ICFs that comply with the ratings described in IRR-1010 and the table in the section above.

Airlite Plastics Co. 525 Kansas Avenue Omaha, NE 68110 USA	Airlite Plastics Co. 2860 Bath Pike Nazareth, PA 18064 USA
Poly Foam Corporation 2355 Providence Road PO Box 906 Northbridge, MA 01534 USA	Tegrant Diversified Brands 1100 Garden of the Gods Rd Colorado Springs, CO 80907 USA
FMI-EPS, LLC (Post Falls) 9456 N McGuire Road Post Falls, ID 83854 USA	Cellofoam NA Inc. 11237 Astronaut Blvd Orlando, FL 32837 USA
FMI-EPS, LLC (Jerome) 280 Rose Street Jerome, ID 83338 USA	Polymos Inc. 3333 F.X. Tessier, Vaudreuil-Dorion, QC J7V 5V5 Canada
Modern Polymers Inc LLC 901 West Academy Cherryville, NC 28021 USA	Diversified Plastics Corp. 108 W Mt. Vernon St. Nixa, MO 65714 USA

Schaumaplast Foam Molders LP 21 N.39 <sup>th</sup> Avenue Phoenix, AZ 85009 USA	HW Manufacturing Inc. Mile Ten Road Starbuck, MB R0G 2P0 Canada
Insulfoam 628 Western Drive Anchorage, AK 99501 USA	Plymouth Foam Inc. 13900 Industry Ave. Becker, MN 55308 USA
Downeast Plastics Ltd. 2598 Chemin Acadie Road Cap-Pele, NB E4N 1E3 Canada	APTCO LLC 31381 Pond Road MacFarland, CA 93250 USA
Foam Fabricators, Inc. 900 E. Parkway Keller, TX 76248 USA	EFP Corp. 1102 Brooks St. SE Decatur, AL 35601 USA
EFP Corp. 233 Middleton Run Rd. Elkhart, IN 46516 USA	

The following facilities are under Intertek inspection for the quality control of the Fox Blocks Cross-Ties:

Airlite Plastics Co. 6110 Abbot Drive Omaha, NE 68110 USA	Airlite Plastics Co. 2860 Bath Pike Nazareth, PA 18064 USA
--	---

<u>Attribute</u>	<u>Value</u>
Code Reports	Yes
Criteria	CAN / ULC S701 (2005)
Criteria	ASTM E283 (2004)
Criteria	CAN / ULC S101 (2007)
Criteria	ASTM C578 (2008)
Criteria	ICC-ES AC353 (2007)
Criteria	ASTM E331 (2009)

Criteria	ASTM C578 (2009e1)
Criteria	ASTM E119 (2010)
Criteria	CAN / ULC S701 (2011)
Criteria	ASTM C578 (2010a)
Criteria	ASTM C578 (2011)
Criteria	ASTM C578 (2012)
Criteria	CAN/ULC S717.1 (2012)
Criteria	ASTM E2634 (2011)
CSI Code	03 10 00 Concrete Forming and Accessories
Intertek Services	Certification
Listed or Inspected	LISTED
Listing Section	CONCRETE FORMS
	3103050; 3103255; 3114608; 3182745; 3186516; 3193147; 3193149; 100061415; 100146783; 100155912; 100412773; 100546682; 100675099COQ; 100756430MID; 100955609COQ; 100749979COQ; 101217382COQ; 101240281COQ; 101259075COQ; 101463741COQ; 101539455COQ; 101568946COQ; 101571230TOR; 101571239COQ; 101624180COQ; 101680922COQ; 101757474COQ, 101766167COQ, 101766276COQ
Report Number	
Spec ID	32745

# DRAWING INDEX

FXB/ICF 240-01

# FXB/ICF 240-01

Division 03 – Concrete  
 03 11 00 Concrete Forming  
 03 11 19 Insulating Concrete Forming

Page 1 of 2

**Design Number FXB/ICF 240-01**  
**FOX BLOCK INSULATED CONCRETE FORMS**

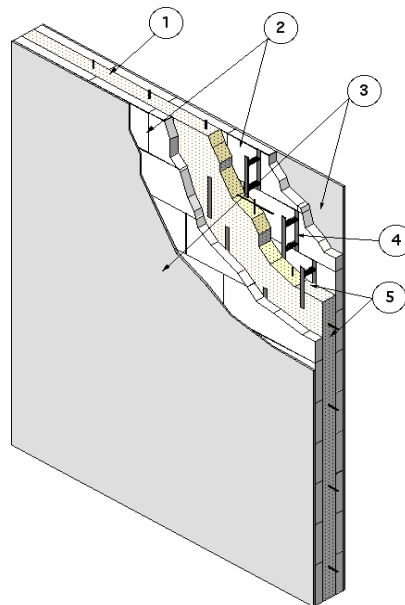
Fox Blocks, a Division of Airlite Plastics Co.

ASTM E119-11a

ULC / CAN S101-07

Fire Rating Only - Load Rating Not Within The Scope Of This Listing

Assembly Rating – 2, 3 and 4 hours



FORMED WALL THICKNESS	MAX FIRE RATING
4 in. (102 mm)	2 Hour
6 in. (152 mm)	4 Hour
8 in. (203 mm)	4 Hour
10 in. (254 mm)	4 Hour
12 in. (305 mm)	4 Hour

1. CONCRETE: Pour normal weight concrete (density typically between 145-155 pcf) having a minimum 21 MPa (3,000 psi) nominal compressive strength into the forming system (Item 2).

2. CERTIFIED MANUFACTURER: Airlite Plastics Co.

CERTIFIED PRODUCT: Fox Block Insulated Concrete Forms (ICF)

FORMING SYSTEM: The Fox Block ICF forming system consists of Type 2 (CAN/ULC S701) or Type II (ASTM C578) molded expanded polystyrene (EPS) foam panels with embedded polypropylene ties that come

Date Revised: June 26, 2013  
 Project No: 100546682



## FXB/ICF 240-01 (page 2 of 2)

Division 03 – Concrete  
03 11 00 Concrete Forming  
03 11 19 Insulating Concrete Forming

Page 2 of 2

preassembled as blocks and are produced in nominal concrete core widths of 4 in. (102 mm), 6 in. (152 mm), 8 in. (203 mm), 10 in. (254 mm), and 12 in. (305 mm) widths. The Fox Block ICFs are produced in 48 in. length x 16 in. height (1220 mm x 410 mm) for all core thicknesses. All Fox Block ICF products have an EPS panel thickness of 2-5/8 in. (66.7 mm). The top and bottom of the EPS panels have an interlocking system which aligns the forms together as they are stacked together. Fox Block ICF systems have polypropylene ties spaced at 8 in. (203 mm) on center (oc) in the cavity of the ICF that include flanges acting as furring strips for mechanical fastening.

3. SHEATHING AND EXTERIOR FINISHES (OPTIONAL): Not required for the fire resistance ratings described in this listing.

An approved thermal barrier may be installed subject to the requirements of the applicable Building Code.

When desired, exterior finishes may be applied to the exterior side of the forming system (Item 2) wall assembly without diminishing the assembly rating. Exterior Insulation Finish System (EIFS), any exterior stucco, brick or brick veneer, stone or stone veneer, cultured stone and siding made from vinyl, aluminum, wood, or steel may be used. Apply exterior

finishes in accordance with the manufacturer's instructions.

4. POLYPROPYLENE FORM TIES: Each 48 in. (1220 mm) of length, Fox Block ICF have six polypropylene ties. The polypropylene ties are spaced nominally 8 in. (203 mm) oc. The polypropylene ties are open to allow concrete to flow easily, and to allow seating for the placement of horizontal and vertical rebar placement.
5. STEEL REINFORCEMENT: Place the steel reinforcement before filling the forming system with concrete (Item 1). The rebar used is to be designed and placed per the applicable code requirements and approved by a registered design professional with the appropriate license for the Authority Having Jurisdiction.
6. WALL ASSEMBLY: The Fox Block ICF wall assembly may be used as either an interior or exterior wall. ICFs exposed to the interior of a building shall have a thermal barrier (item 3) attached. Exterior walls are only required to have a thermal barrier on the side facing the interior of the building. The fire resistance rating is applicable to the Fox Block ICF wall assembly from either side.

Date Revised: June 26, 2013  
Project No: 100546682

Intertek